
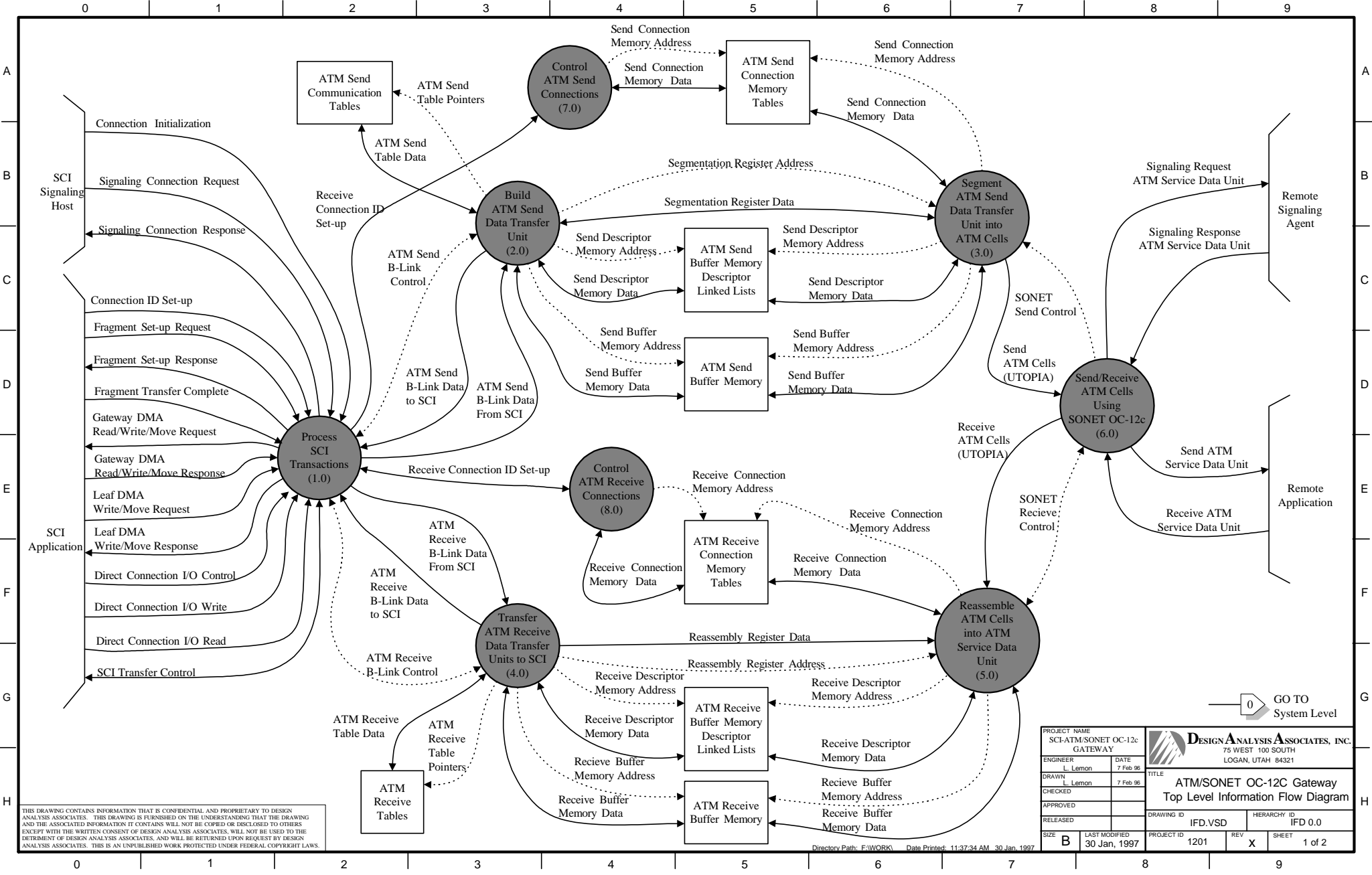


THIS DRAWING CONTAINS INFORMATION THAT IS CONFIDENTIAL AND PROPRIETARY TO DESIGN ANALYSIS ASSOCIATES. THIS DRAWING IS FURNISHED ON THE UNDERSTANDING THAT THE DRAWING AND THE ASSOCIATED INFORMATION IT CONTAINS WILL NOT BE COPIED OR DISCLOSED TO OTHERS EXCEPT WITH THE WRITTEN CONSENT OF DESIGN ANALYSIS ASSOCIATES, WILL NOT BE USED TO THE DETRIMENT OF DESIGN ANALYSIS ASSOCIATES, AND WILL BE RETURNED UPON REQUEST BY DESIGN ANALYSIS ASSOCIATES. THIS IS AN UNPUBLISHED WORK PROTECTED UNDER FEDERAL COPYRIGHT LAWS.

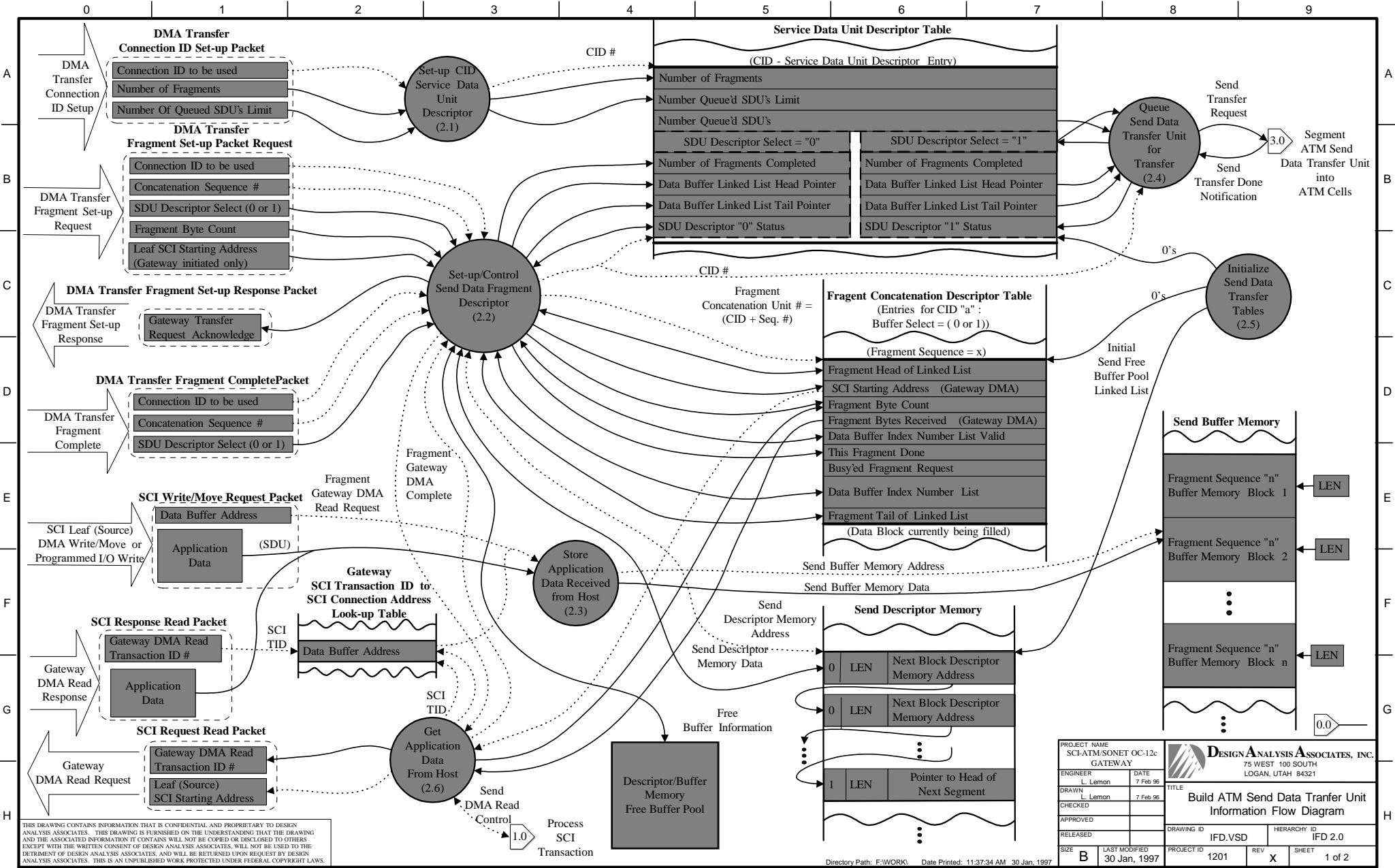
PROJECT NAME SCI-ATM/SONET OC-12c GATEWAY		 DESIGN ANALYSIS ASSOCIATES, INC. 75 WEST 100 SOUTH LOGAN, UTAH 84321	
ENGINEER L. Lemmon	DATE 7 Feb 96	TITLE ATM/SONET OC-12c Gateway System Level	
DRAWN L. Lemmon	7 Feb 96	Information Flow Diagram	
CHECKED		DRAWING ID IFD.VSD	HIERARCHY ID IFD 0
APPROVED		PROJECT ID 1201	REV X
RELEASED		SHEET 1 of 2	
SIZE B	LAST MODIFIED 30 Jan, 1997		



THIS DRAWING CONTAINS INFORMATION THAT IS CONFIDENTIAL AND PROPRIETARY TO DESIGN ANALYSIS ASSOCIATES. THIS DRAWING IS FURNISHED ON THE UNDERSTANDING THAT THE DRAWING AND THE ASSOCIATED INFORMATION IT CONTAINS WILL NOT BE COPIED OR DISCLOSED TO OTHERS EXCEPT WITH THE WRITTEN CONSENT OF DESIGN ANALYSIS ASSOCIATES. WILL NOT BE USED TO THE DETRIMENT OF DESIGN ANALYSIS ASSOCIATES, AND WILL BE RETURNED UPON REQUEST BY DESIGN ANALYSIS ASSOCIATES. THIS IS AN UNPUBLISHED WORK PROTECTED UNDER FEDERAL COPYRIGHT LAWS.

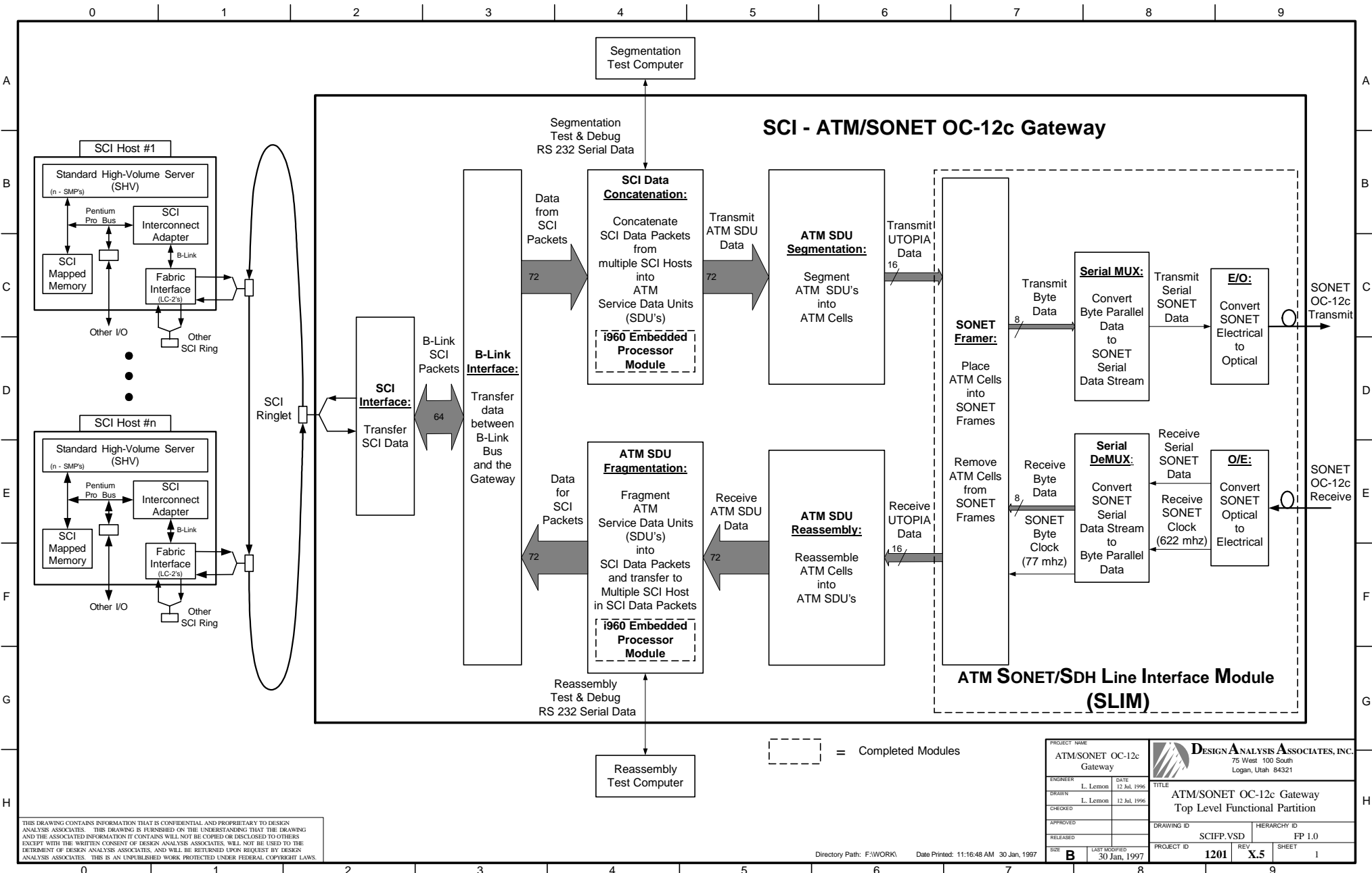
Directory Path: F:\WORK\ Date Printed: 11:37:34 AM 30 Jan 1997

PROJECT NAME SCI-ATM/SONET OC-12c GATEWAY		DESIGN ANALYSIS ASSOCIATES, INC. 75 WEST 100 SOUTH LOGAN, UTAH 84321	
ENGINEER L. Lemon	DATE 7 Feb 96	TITLE ATM/SONET OC-12c Gateway Top Level Information Flow Diagram	
DRAWN L. Lemon	7 Feb 96	DRAWING ID IFD.VSD	HIERARCHY ID IFD 0.0
CHECKED		PROJECT ID 1201	REV X
APPROVED		SHEET 1 of 2	
RELEASED		LAST MODIFIED 30 Jan, 1997	



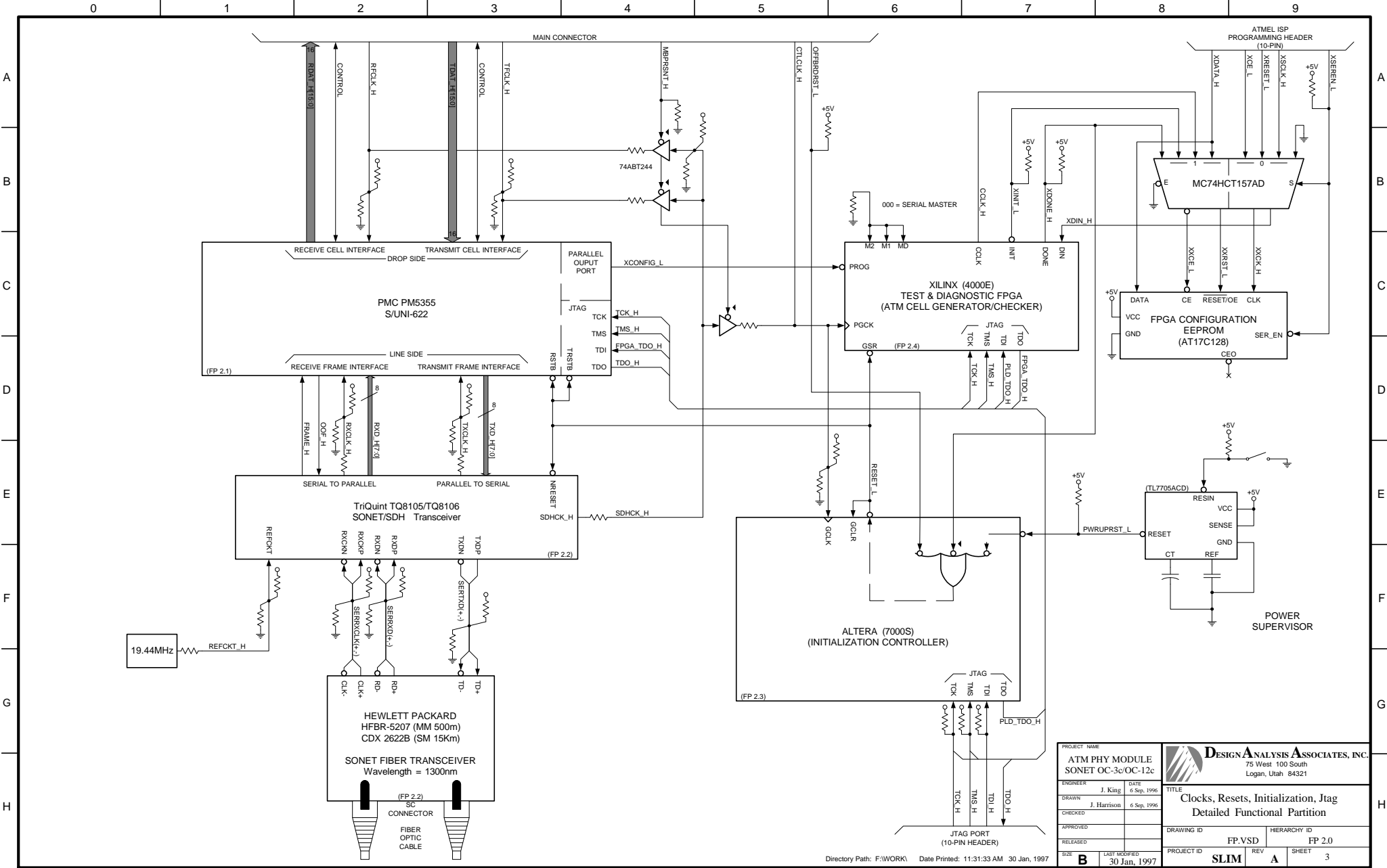
THIS DRAWING CONTAINS INFORMATION THAT IS CONFIDENTIAL AND PROPRIETARY TO DESIGN ANALYSIS ASSOCIATES. THIS DRAWING IS FURNISHED ON THE UNDERSTANDING THAT THE DRAWING AND THE ASSOCIATED INFORMATION IT CONTAINS WILL NOT BE COPIED OR DISCLOSED TO OTHERS EXCEPT WITH THE WRITTEN CONSENT OF DESIGN ANALYSIS ASSOCIATES, WILL NOT BE USED TO THE DETRIMENT OF DESIGN ANALYSIS ASSOCIATES, AND WILL BE RETURNED UPON REQUEST BY DESIGN ANALYSIS ASSOCIATES. THIS IS AN UNPUBLISHED WORK PROTECTED UNDER FEDERAL COPYRIGHT LAWS.

PROJECT NAME SCI-ATM/SONET OC-12c GATEWAY		DATE 7 Feb 98		DESIGN ANALYSIS ASSOCIATES, INC. 75 WEST 100 SOUTH LOGAN, UTAH 84321	
ENGINEER L. Lemon	DATE 7 Feb 98	TITLE Build ATM Send Data Transfer Unit Information Flow Diagram			
DRAWN L. Lemon	7 Feb 98	DRAWING ID IFD.VSD			
CHECKED		HIERARCHY ID IFD 2.0			
APPROVED		PROJECT ID 1201			
RELEASED		REV X			
SIZE B	LAST MODIFIED 30 Jan, 1997	SHEET 1 of 2			



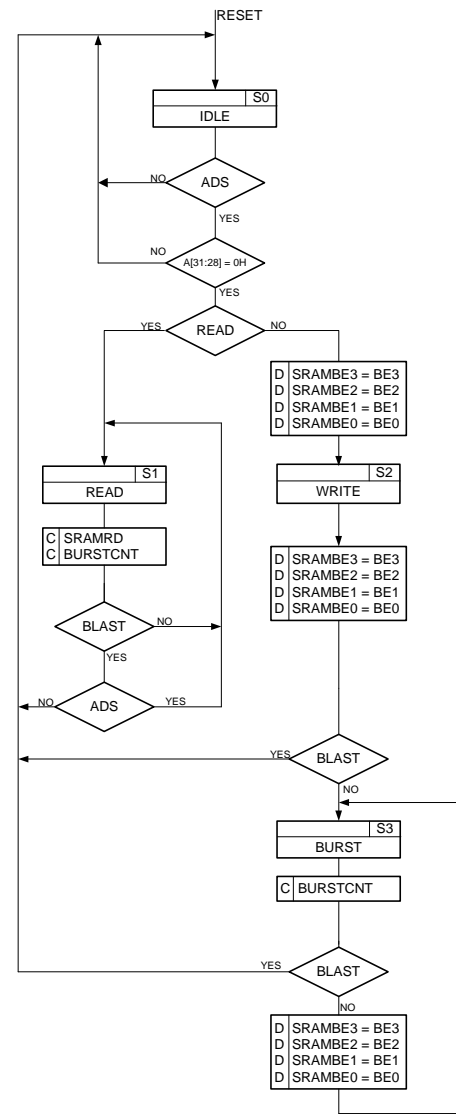
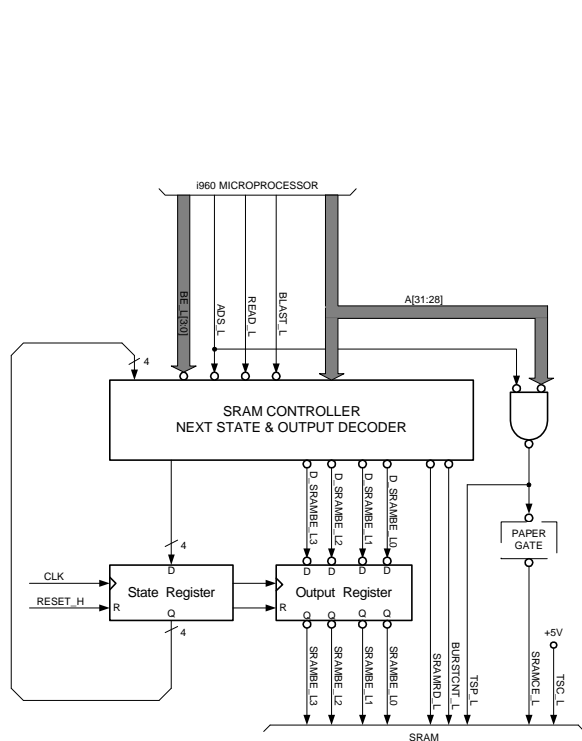
THIS DRAWING CONTAINS INFORMATION THAT IS CONFIDENTIAL AND PROPRIETARY TO DESIGN ANALYSIS ASSOCIATES. THIS DRAWING IS FURNISHED ON THE UNDERSTANDING THAT THE DRAWING AND THE ASSOCIATED INFORMATION IT CONTAINS WILL NOT BE COPIED OR DISCLOSED TO OTHERS EXCEPT WITH THE WRITTEN CONSENT OF DESIGN ANALYSIS ASSOCIATES. WILL NOT BE USED TO THE DETRIMENT OF DESIGN ANALYSIS ASSOCIATES, AND WILL BE RETURNED UPON REQUEST BY DESIGN ANALYSIS ASSOCIATES. THIS IS AN UNPUBLISHED WORK PROTECTED UNDER FEDERAL COPYRIGHT LAWS.


PROJECT NAME ATM/SONET OC-12c Gateway		DESIGN ANALYSIS ASSOCIATES, INC. 75 West 100 South Logan, Utah 84321	
ENGINEER L. LEMON	DATE 12 Jul, 1996	TITLE ATM/SONET OC-12c Gateway Top Level Functional Partition	
DRAWN L. LEMON	DATE 12 Jul, 1996	DRAWING ID SCIFP.VSD	HERARCHY ID FP 1.0
CHECKED		PROJECT ID 1201	REV X.5
APPROVED		SHEET 1	
RELEASED			
SIZE B	LAST MODIFIED 30 Jan, 1997		

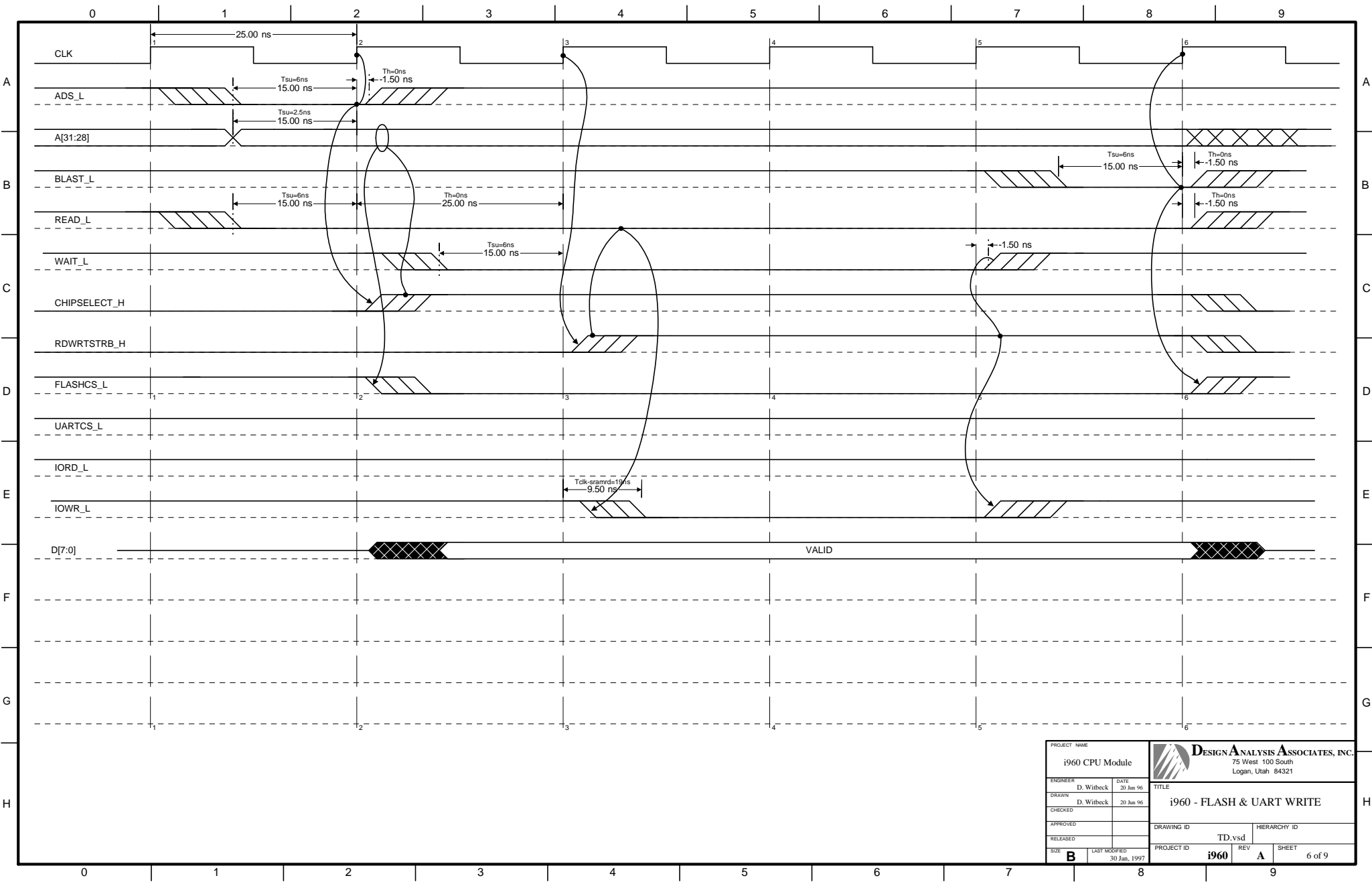



Directory Path: F:\WORK\ Date Printed: 11:31:33 AM 30 Jan, 1997

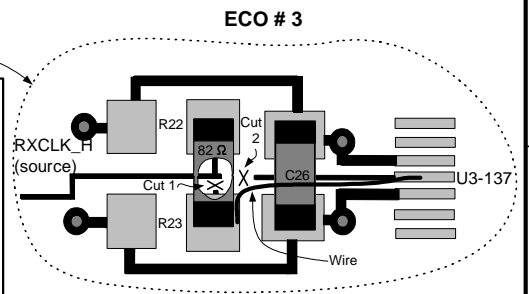
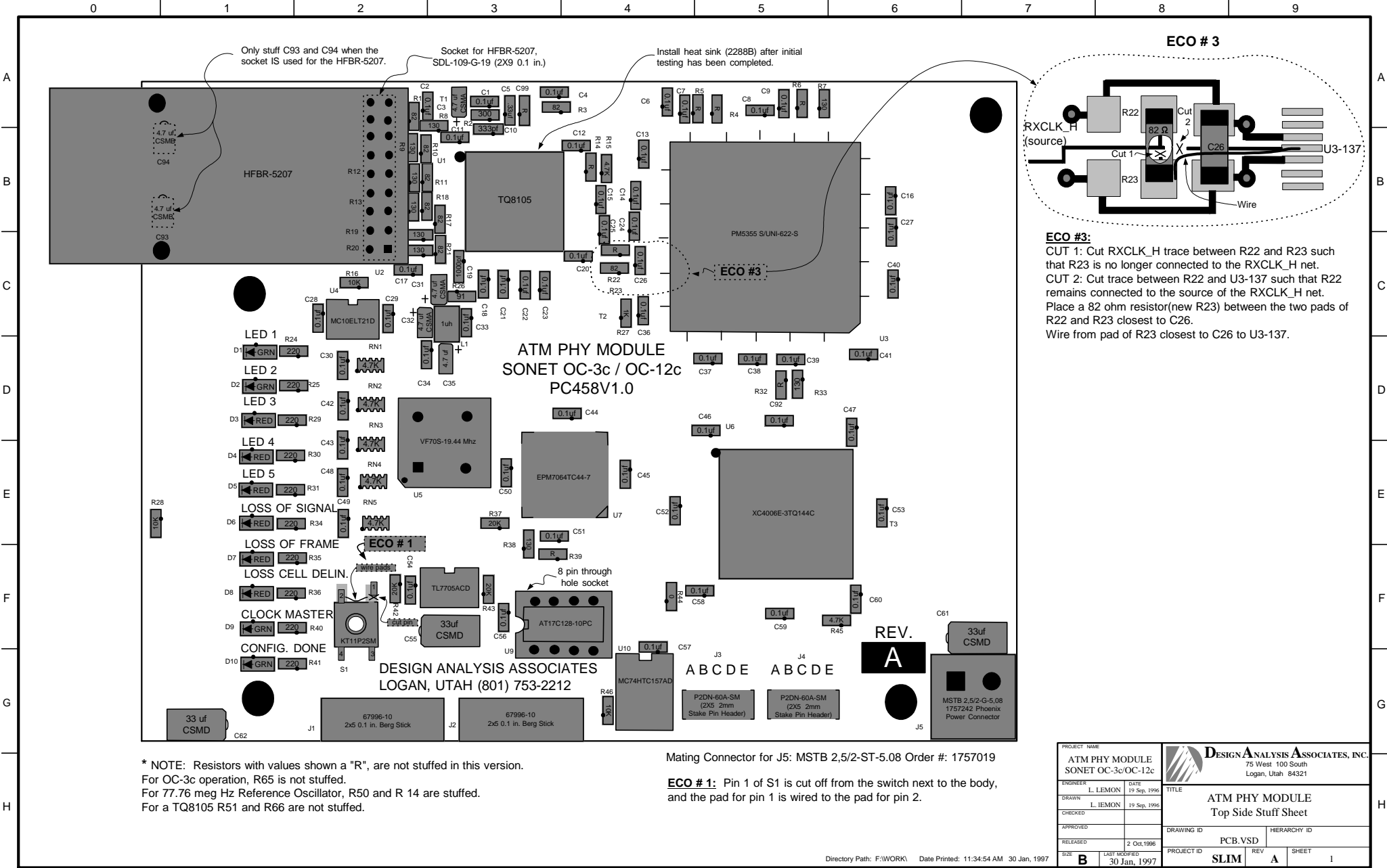
PROJECT NAME ATM PHY MODULE SONET OC-3c/OC-12c		DESIGN ANALYSIS ASSOCIATES, INC. 75 West 100 South Logan, Utah 84321	
ENGINEER J. King	DATE 6 Sep, 1996	TITLE Clocks, Resets, Initialization, Jtag Detailed Functional Partition	
DRAWN J. Harrison	CHECKED 6 Sep, 1996	DRAWING ID FP.VSD	HIERARCHY ID FP 2.0
APPROVED	RELEASED	PROJECT ID SLIM	REV A
SIZE B	LIST REVISIONS 30 Jan, 1997	PROJECT ID SLIM	SHEET 3



PROJECT NAME i960 CPU Module		 DESIGN ANALYSIS ASSOCIATES, INC. 75 West 100 South Logan, Utah 84321	
ENGINEER D. Witbeck	DATE 04 JUN 96	TITLE i960 CPU Module Controller Detailed Functional Partition (1 of 2)	
CHECKED J. King	DATE 11 JUL 96	DRAWING ID CFD.VSD	HIERARCHY ID FP 1.1
APPROVED		PROJECT ID i960	REV A
RELEASED		LIST NUMBER 30 Jan, 1997	SHEET 2 of 9



PROJECT NAME i960 CPU Module		 DESIGN ANALYSIS ASSOCIATES, INC. 75 West 100 South Logan, Utah 84321	
ENGINEER D. Witbeck	DATE 20 Jun 96	TITLE i960 - FLASH & UART WRITE	
DRAWN D. Witbeck	20 Jun 96	DRAWING ID TD.vsd	HIERARCHY ID
CHECKED		PROJECT ID i960	REV A
APPROVED		SHEET	6 of 9
RELEASED			
SIZE B	LAST MODIFIED 30 Jan, 1997		



ECO #3:
CUT 1: Cut RXCLK_H trace between R22 and R23 such that R23 is no longer connected to the RXCLK_H net.
CUT 2: Cut trace between R22 and U3-137 such that R22 remains connected to the source of the RXCLK_H net.
 Place a 82 ohm resistor (new R23) between the two pads of R22 and R23 closest to C26.
 Wire from pad of R23 closest to C26 to U3-137.

* NOTE: Resistors with values shown a "R", are not stuffed in this version.
 For OC-3c operation, R65 is not stuffed.
 For 77.76 meg Hz Reference Oscillator, R50 and R 14 are stuffed.
 For a TQ8105 R51 and R66 are not stuffed.

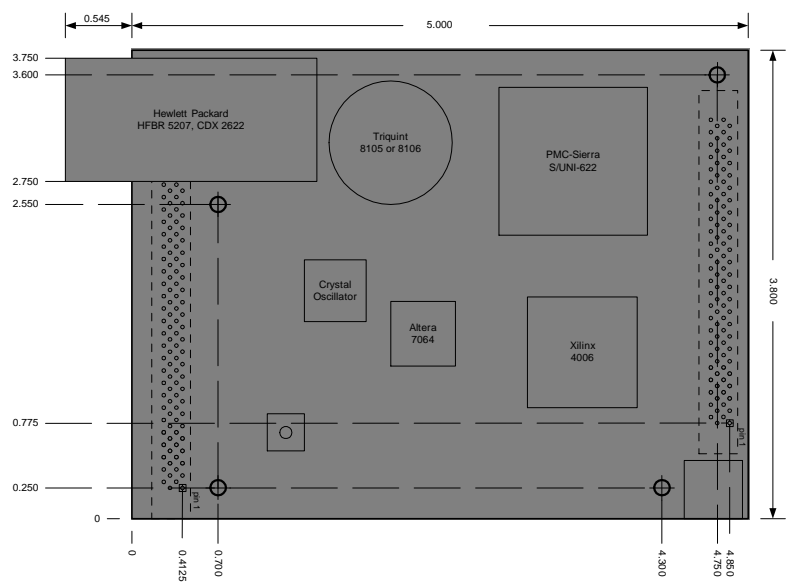
Mating Connector for J5: MSTB 2,5/2-ST-5.08 Order #: 1757019
ECO #1: Pin 1 of S1 is cut off from the switch next to the body, and the pad for pin 1 is wired to the pad for pin 2.

PROJECT NAME ATM PHY MODULE SONET OC-3c/OC-12c		DESIGN ANALYSIS ASSOCIATES, INC. 75 West 100 South Logan, Utah 84321	
ENGINEER L. LEMON	DATE 19 Sep, 1996	TITLE ATM PHY MODULE Top Side Stuff Sheet	
DRAWN L. LEMON	19 Sep, 1996	DRAWING ID PCB.VSD	HIERARCHY ID
CHECKED		PROJECT ID SLIM	REV A
APPROVED		SHEET 1	
RELEASED 2 Oct, 1996	LIST MODIFIED 30 Jan, 1997		

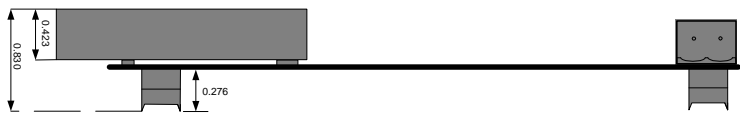
0 1 2 3 4 5 6 7 8 9

A
B
C
D
E
F
G
H


Top View



Side View



Notes:
All diminstions are in inches.
Mounting Holes are 0.120 in diameter.
Scale is 1:1 on 'B' size sheet.

PROJECT NAME ATM PHY MODULE SONET OC-3c/OC-12c		 DESIGN ANALYSIS ASSOCIATES, INC. 75 West 100 South Logan, Utah 84321	
ENGINEER D. Witbeck	DATE 26 Sep, 1996	TITLE Mechanical Drawing	
DRAWN D. Witbeck	26 Sep, 1996	DRAWING ID ME.VSD	HIERARCHY ID
CHECKED		PROJECT ID SLIM	REV A
APPROVED		SHEET 1 of 1	
RELEASED			
SIZE B	LIST MODIFIED 30 Jan, 1997		

0 1 2 3 4 5 6 7 8 9